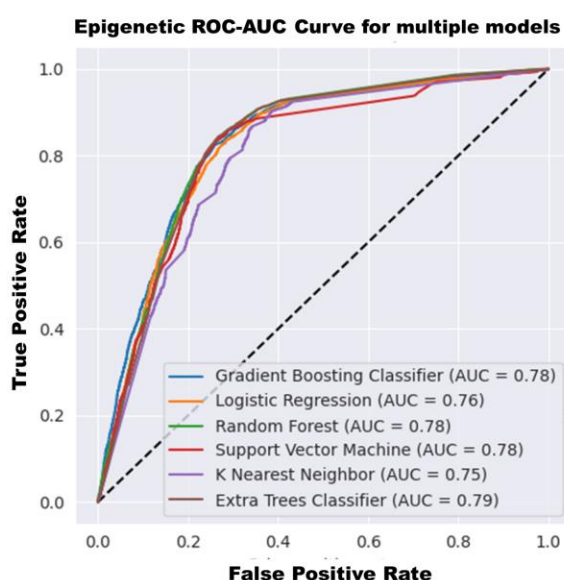


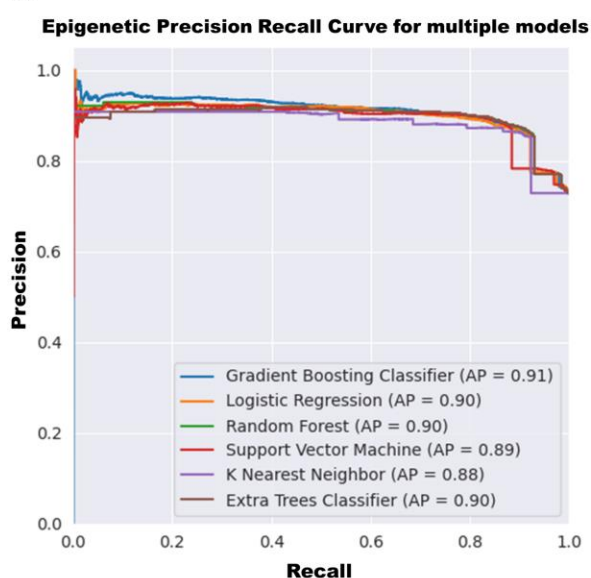
A.

Metric	Epigenetics Feature Model Testing Performance					
	Gradient Boosting Classifier	Random Forest Classifier	Extra Trees Classifier	Logistic Regression	Support Vector Machine	K Nearest Neighbor
Accuracy	0.80	0.81	0.81	0.74	0.80	0.77
Precision	0.88	0.89	0.89	0.90	0.89	0.87
Recall	0.83	0.85	0.84	0.72	0.82	0.79
F1	0.85	0.87	0.87	0.80	0.85	0.83
AUC	0.77	0.78	0.78	0.76	0.78	0.75
Average Precision-Recall	0.91	0.90	0.90	0.90	0.89	0.88

B.



C.



**Supplementary Figure S12.** (A) In Table A, we display the prediction performance of the models trained solely on the "Epigenetic" feature subset. The table summarizes the algorithms' best scores on the testing dataset for each criterion (accuracy, precision, recall, F1, AUC-ROC, Average Precision-Recall). (B,C) Graphical representation of the prediction performance of the "Epigenetic" model evaluated on the test set using AUC-ROC (left) and Precision Recall Curve PR metrics (right).